

Data Center Opportunities in Winnipeg, Manitoba



YES!
WINNIPEG

October 24, 2017

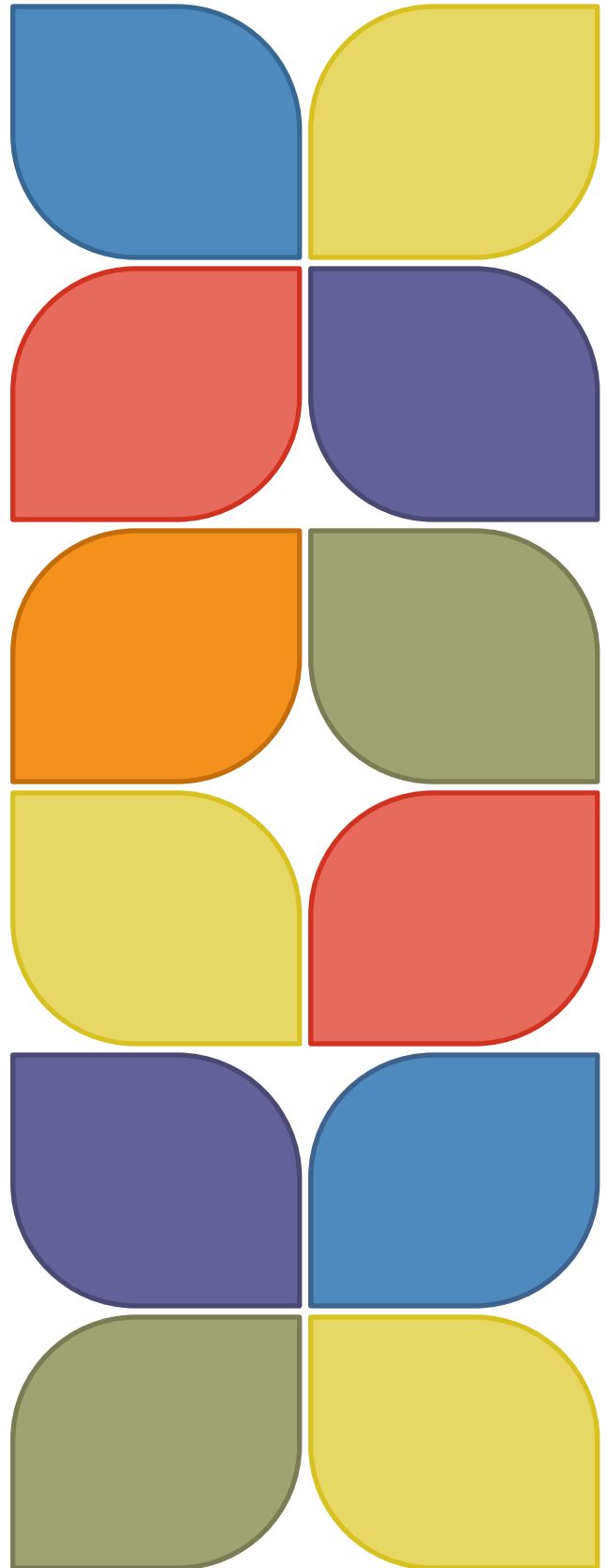


Table of Contents

Data Centers	3
Telecom	4
Power.....	8
Water Supply and Quality	9
Geography	12
Cost of Operations.....	14
Major Taxes in Manitoba	14
Supportive Community	16
Incentives	17
Our Services.....	20

DATA CENTERS

When considering a location for a new data center there are four main criteria that companies consider: Telecom, Power, Geography, and Climate. In addition to The City of Winnipeg offering significant advantages in all of these areas, Winnipeg is ranked as having some of the lowest costs of operating a business in North America. Over the last couple of years these house hold names have leveraged Winnipeg's advantages and made major data center investments in Winnipeg:

Bell MTS Data Center

64,000 square foot reliable, secure and connected co-location data center. Built to highest industry standards in security and reliability, including Uptime Institute's Tier III design certification.

Highlights:

- 25,000 square foot data hall
- 24/7/365 customer access with onsite network operations center and security personnel
- Up to 5.0 kW with higher density available upon request
- Carrier neutral with multiple diverse paths providing reliable network connectivity
- 7.5 MW facility power
- 66 kV feeder lines
- 1,100t cooling capacity

Manitoba Hydro Telecom

Whether for business, education, or network expansion, a stable, robust, and scalable colocation environment is key to a robust continuity plan. Manitoba Hydro Telecom (MHT) leases cabinets to clients on a monthly basis to meet this need. Off-site data center space should be an integral component to your organizations network solution.

Highlights:

- 100% uptime since operations began in 2010 with full power redundancy and backup systems
- Leed® Platinum certified facility
- 95 KV per feed
- Carrier-neutrality and access to all the major telecommunications carriers
- Your equipment is safe with comprehensive physical security, climate control, fire control, and 24/7 monitoring and support
- Space and electrical power can be increased as needed, ensuring that as your business grows, your colocation needs will be met

LES.NET

As companies grow, their needs for security, storage, and redundancy increase as well. Data, whether it is customer records, or financial information, needs to be secured. LES.NET offers secure data center and co-location services that won't break the bank. Conveniently located in central Winnipeg, LES.NET offers a solution that can accommodate the needs of any sized business.

Highlights:

- Direct internet access from 10 Megabit to 20 Gigabit Connectivity
- Conditioned back-up power
- Monitored climate control
- Carrier-neutrality
- Space customization

Fiber Fortress

Fiber Fortress owns a commercial data center in Winnipeg, Manitoba. This site is ideal for any company that is looking for a primary data center for their operations or a backup facility for disaster recovery planning. Full cabinets and private suites are currently available for lease. There are also offices available on-site for companies to lease for their disaster recovery operations.

Highlights:

- 24/7/365 unescorted access
- Leasing space means that capital will be preserved and customers can expense their costs in the current year as opposed to depreciating over several years
- Generator and UPS power means that servers will remain operational 100% of the time
- Card access and alarm system ensure the customer's servers will remain secure
- Multiple carriers ensure the customer's mission-critical data remains accessible

Canadian Tire

\$80 Million investment and is one of the most advanced centers of its kind in North America, the 28,000 square foot site houses a digital content warehouse, application lab, testing lab and high performance data center. It serves as the core digital hub for the Canadian Tire Family of Companies.

Great-West Life

GWL's \$40 Million investment combined its Canadian data centers into a new, 50,000 square foot state-of-the-art green data center in Winnipeg. It includes the best security features, designed to protect the integrity and security of data from both unauthorized access and natural disasters.

TELECOM

Winnipeg's broadband connectivity is well established. The state-of-the-art telecommunications infrastructure is of particular importance for technology-based businesses. The availability of broadband in Winnipeg is at 100 percent. As well, the competitive telecommunications environment, with several alternative long-distance carriers, keeps rates low in Winnipeg. With a central time zone location, Winnipeg's business hours are accessible and cost-effective across the continent.

- All major East-West fiber routes across Canada pass through Winnipeg. The fiber paths are built along railway right of ways. Historically Winnipeg has been a hub of transportation and hence a center of rail traffic for the country. Winnipeg also is the starting point for fiber routes south to the USA.
- Redundant fiber optic networks that are carrier diverse are readily available for data center operations within the City of Winnipeg.
- Low latency Internet Gateway as two new local Internet exchanges have been established

Winnipeg-based telecommunications providers include Bell MTS, Manitoba Hydro Telecom, Telus, Rogers, Shaw Communications and a host of resellers. Corporate alliances with major U.S. companies ensure seamless provision of cross-border products and services. The internet bandwidth available in Manitoba ranges from 80 to 100 gbps from four different directions out of Winnipeg.

For super-high speed requirements, the Canadian Advanced Networks for the Advancement of Research in Industry and Education (CANARIE), through its Manitoba affiliate, Manitoba Regional Advanced Network (MRnet), offers members access to a Canada-wide high-speed optical network delivering unrivalled network capability for broadband research.

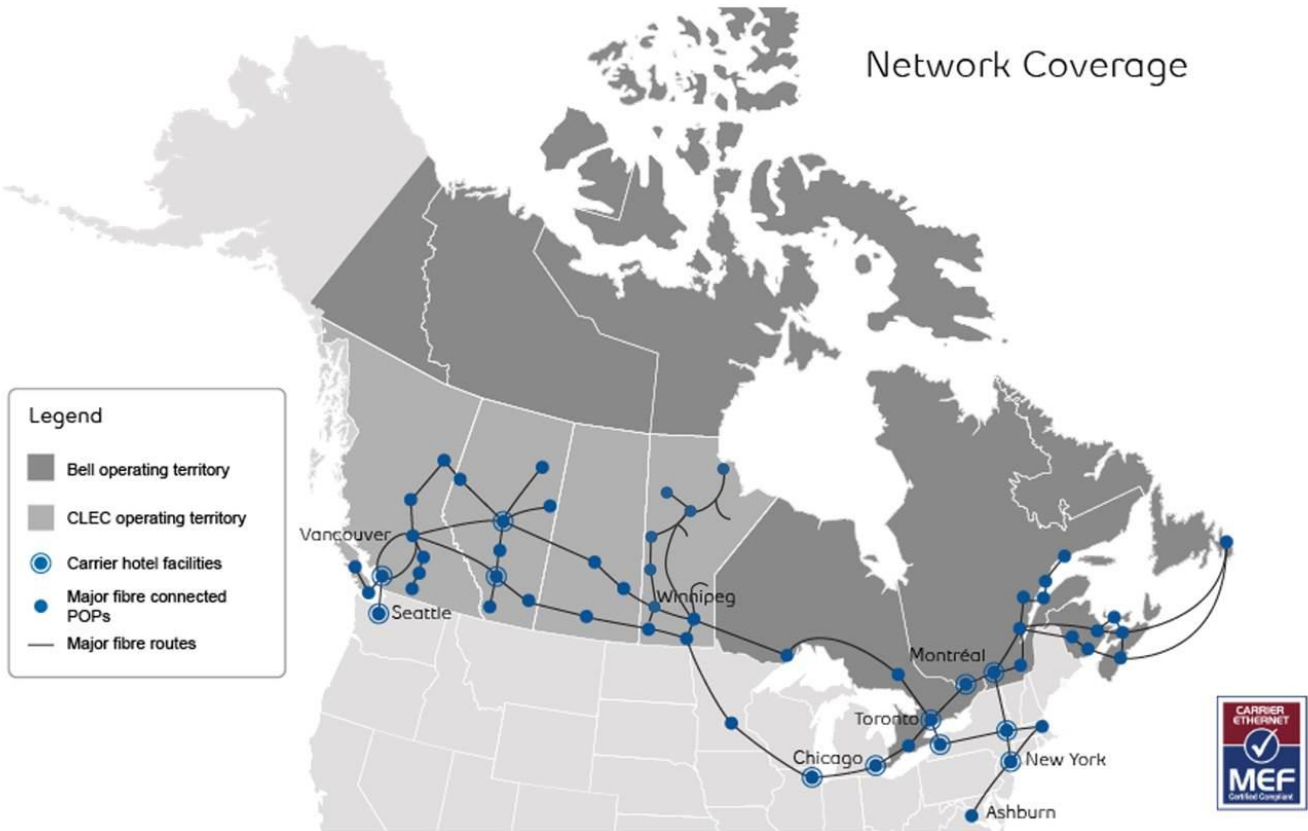
Supporting these networks are data centers that offer superior redundancy and reliability services, such as the Uptime Institute Tier III design certified Bell MTS Data Center.

Bell MTS is Manitoba's leading communications company, providing a comprehensive and innovative suite of broadband communications and content services. Bell MTS, the dominate Telecom provider in Manitoba has three fiber rings in Winnipeg and 100% digital switching throughout the province. They recently announced a transformative investment in Manitoba's digital economy with plans to bring the most advanced broadband and wireless services available to Innovation Alley, the growing community of innovators, entrepreneurs and artists in downtown Winnipeg. Innovation Alley is to be the Winnipeg launch point for Gigabit Fiber Internet and LTE-Advanced wireless, part of the Bell MTS plan to invest \$1 billion over 5 years to accelerate broadband communications services throughout Manitoba.

Manitoba Hydro Telecom (MHT) is a facilities-based, carrier-class telecom service provider with a comprehensive fibre network in Winnipeg and rural Manitoba. Ethernet technology allows MHT to offer scalable broadband capacity and direct Internet access. MHT enhances its service offering through colocation services in the MHT Datacenter, at Manitoba Hydro facilities, and on radio towers. Locations that MHT cannot service directly are accessed through one of many partner service providers. The combination of these services creates high-quality and unique network solutions capable of meeting any organizations' needs.

Recently, Manitoba Hydro Telecom developed a new fibre build to the U.S. Pembina border connecting with the Wiktel fibre network in Minnesota and connecting into a POP at 232 20th St NW East Grand Forks, MN. There are multiple fibre routes from there to Minneapolis or Chicago or Seattle. MHT is also expecting to have a future Transmission Line - OPFW fibre from Wpg to Duluth, MN.

Bell MTS Network Coverage



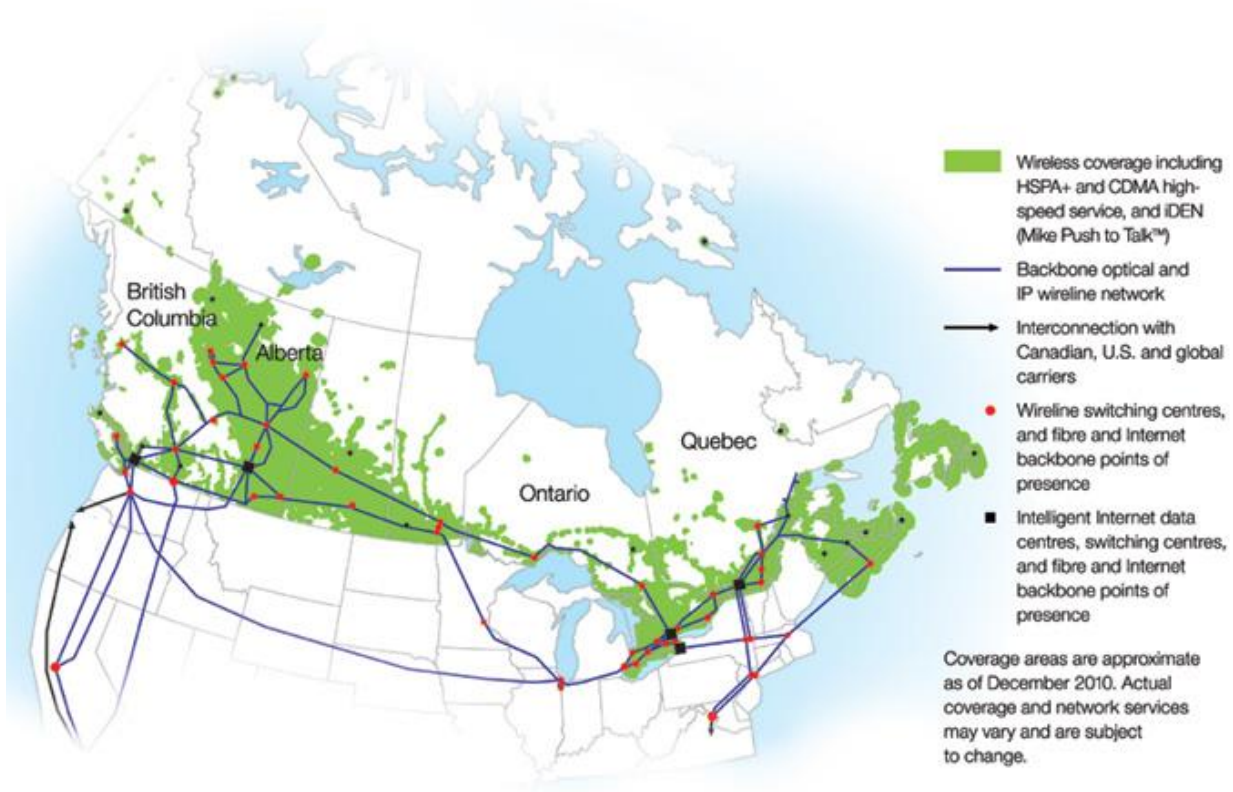
Rogers Network Coverage



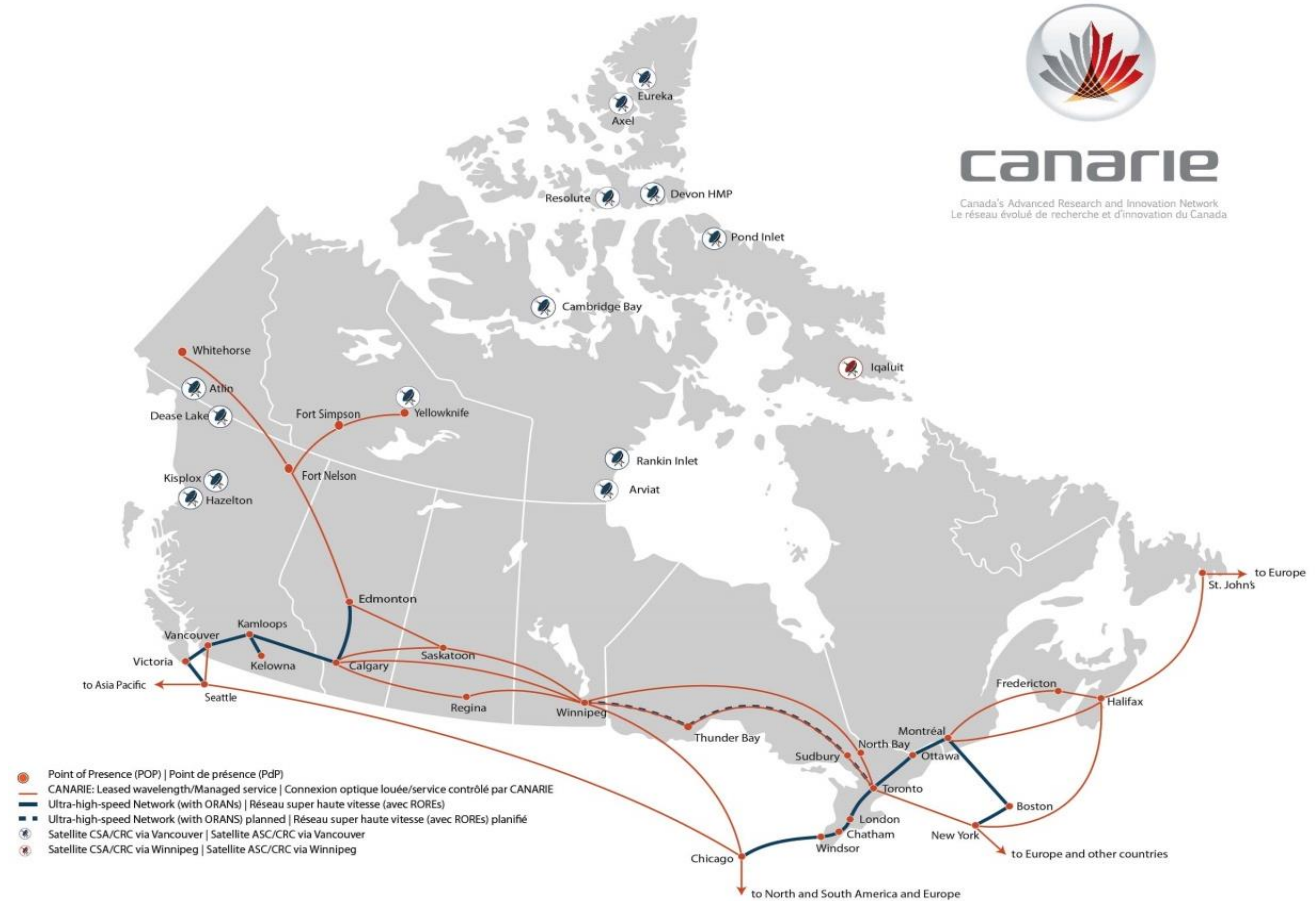
Zayo (Allstream) Network Coverage



Telus Network Coverage



Canarie Coverage



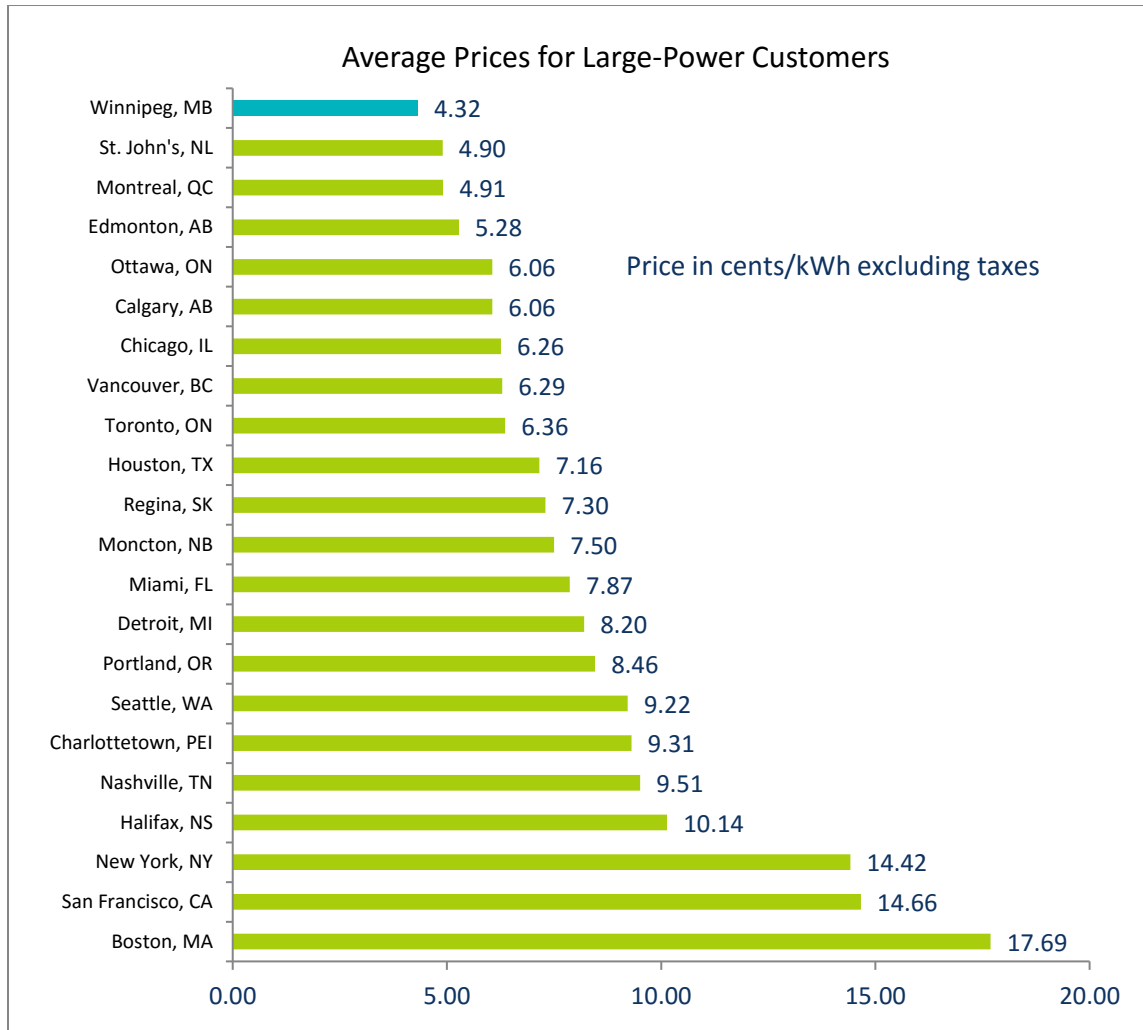
POWER

Manitoba Hydro is the province's major energy utility and produces about 30 billion kilowatt-hours on average per year. This is generated at 15 hydroelectric generating stations (99% of the electricity), 2 thermal generating stations, and from two wind farms in Manitoba.

- Abundance of clean, reliable and renewable energy
- Winnipeg offers amongst the lowest published electricity rates in North America
- As many jurisdictions introduce carbon-tax legislation, Manitoba's clean energy is becoming an ever-increasing competitive financial advantage
- Manitoba Hydro's Power SMART Program offers various savings and incentives programs to assist businesses to be energy efficient and to save in operating costs

Average Prices for Large-Power Customers on April 1, 2017

Consumption: 30,060,000 kWh, Power Demand: 50,000 kW, Voltage: 120 kV, Load Factor 85% in Canadian \$



Source: Hydro Quebec Survey. Rates effective April 1, 2017

WATER SUPPLY AND QUALITY

Manitoba has a number of large aquifers, which can provide significant supplies of low-cost, high quality groundwater; the largest of these is the Carbonate Aquifer. In addition to groundwater sources, Manitoba has abundant supplies of surface water (lakes/streams). Surface water represents approximately 16 percent of Manitoba's surface area.

Using water for cooling vs. using a refrigerant for cooling a data center results in significant cost savings for companies. According to a local data center operation, the amount of power required for a water-cooled system is as much as 50 percent less than the amount of power required for a refrigerant/compressor

system. Considering that greater than 50% of the total power consumption of a data center is used for cooling, **being able to use chilled water can result in overall power savings of 25 percent!**

Winnipeg has access to a number of large aquifers, which provide significant supplies of low-cost, high quality groundwater. City of Winnipeg can provide up to 386 thousand cubic metres of water per day, with a design peak capacity of 351 thousand cubic metres per day. There is no restriction on using water for cooling purposes and the city has no plans to create such restrictions, no permit required.

Winnipeg Rates are effective January 1 of current year.

Water rate

Per cubic metre per quarter	2017 rate	2018 rate
0 - 272	\$1.78	\$1.82
over 272	\$1.78	\$1.82

Sewer rate

Per cubic metre per quarter	2017 rate	2018 rate
	\$2.55	\$2.80

Daily basic charges for City-owned meters

Meter size	2017 rate	2018 rate
5/8" meter	\$0.49	\$0.55
3/4" meter	\$0.51	\$0.57
1" meter	\$0.56	\$0.62
1 1/2" meter	\$0.63	\$0.69
2" meter	\$0.82	\$0.90
3" meter	\$2.21	\$2.39
4" meter	\$2.72	\$2.94
6" meter	\$3.92	\$4.24
8" meter	\$5.29	\$5.71
10" meter	\$6.67	\$7.19

Daily basic charge for privately-owned meters

Meter size (both water and sewer service)	2017 rate	2018 rate
All meter sizes	\$0.44	\$0.50

Waste diversion fee

	2017 rate
Per day	\$0.1555
Annual Rate	\$57.00

Explanation of charges

Water rate

The water charge on your bill is based on the amount of water you use, as measured by the water meter. This covers the cost of bringing water from Shoal Lake to your home, including the cost of operating and maintaining the aqueduct, pumping stations, reservoirs, drinking water treatment plant, and distribution system.

Sewer rate

The sewer charge on your bill is based on the amount of water you use, since most of it ends up as sewage. The revenue is used to collect, transport and treat sewage so that it meets environmental requirements before it is released to the Red and Assiniboine Rivers.

Basic charge

All customers who have metered services are charged regularly to cover the cost of providing service. Billed on a daily rate.

Based on meter size for City-owned meters. It covers the cost of your water meter, customer service, billing and postage. All privately-owned meters are assessed the same basic charge. It covers the cost of customer service, billing and postage. The basic charge can be waived if water is not and cannot physically be supplied to the property.

Waste Diversion Fee

The daily waste diversion fee was introduced to fund new programs that provide residents with more ways to reduce, reuse and recycle

- billed as a daily charge for each dwelling unit,
- added to quarterly utility bills if you have a water account with us,
- billed quarterly if you do not have City water and sewer service.

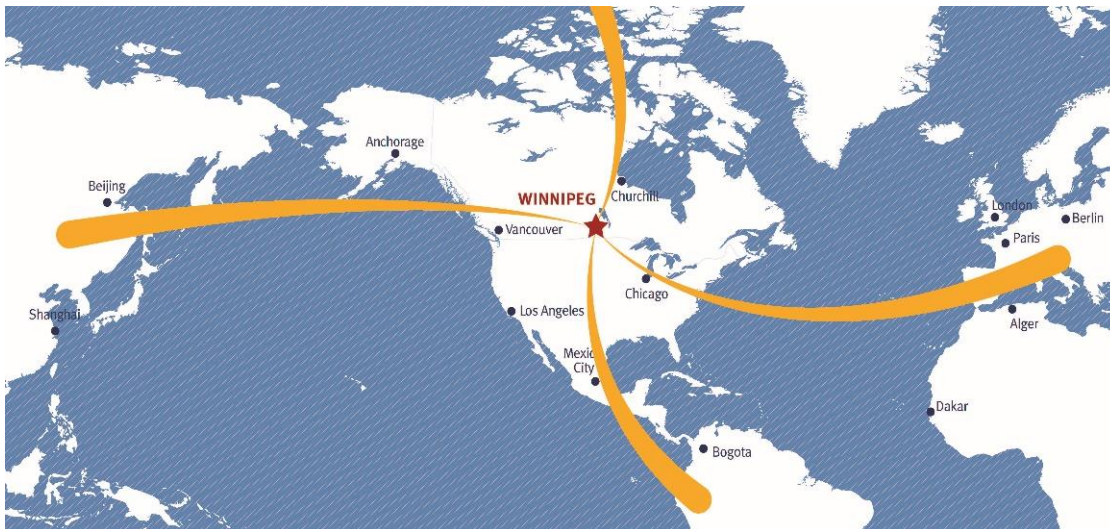
Source: City of Winnipeg

GEOGRAPHY

Location

Due to Winnipeg's location deep in the interior of the North America, natural disasters related to geological factors (earthquake, volcano) are unknown. The city is protected against a 1 in 700 year flood thanks to the Red River Floodway that was recently expanded, and has the lowest risk in North American Mid-West for severe weather, including tornados.

Strategically located in the geographic center of Canada and North America



Population Size & Labour Force

The Winnipeg Capital Region has a population of 812,000 people, and 454,900 people in the workforce.
Source: Statistics Canada 2017

There are over 18,400 information and communication technology (ICT) workers in Winnipeg and three major post-secondary institutions in the city that collectively have over 7,000 students enrolled in ICT related programs. There are also over 300 students enrolled in Electrical Engineering Programs at the University of Manitoba and Red River College. The Province also has a world-renowned immigration program that has selected over 1,000 IT professionals since 2007. On average, wages for ICT companies in Winnipeg are 11% lower than the Canadian average.

Corporate Headquarters

Winnipeg has 3rd highest count of head offices per capita out of Canada's largest cities – 11.0 head offices per 100,000 population.

Source: Annual Head Office Survey 2015.

Airport

The Winnipeg James A. Richardson International Airport is one of the world’s most reliable airports. The airport is conveniently located inside the city, close to downtown.

- Ease of access to 60 direct flight destinations
- 3.16 million annual domestic passengers
- 437,162 annual trans-border passengers
- 185,336 annual international passengers
- 24-hour unrestricted international airport
- Domestic: Air Canada, WestJet, New Leaf Travel, Calm Air, Bearskin
- Direct U.S.: United & Delta Airlines
- Direct International: Air Canada, WestJet, Sunwing, Air Transat

The airport is open 24/7 and offers direct flights to over 40 major cities in North America including all major Canadian cities and several major US destinations. The table below highlights popular direct flights.

Approx. # Daily Direct Flights

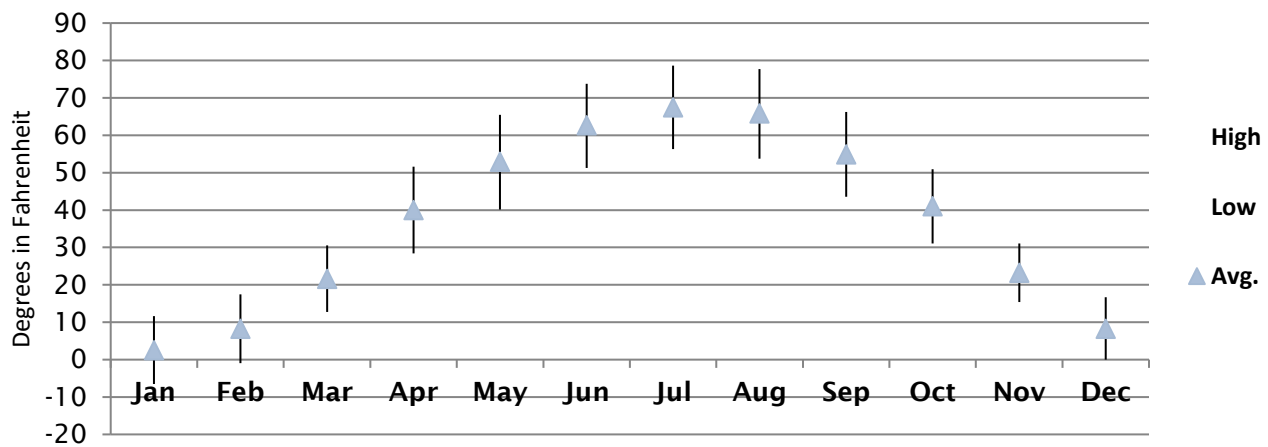
Toronto	7	Denver	3	Calgary	10
Minneapolis	5	Vancouver	4	Chicago	5

Source: Winnipeg Airports Authority 2017

Climate Advantage

- Companies who decide to locate their data centers in Winnipeg have the ability to leverage cool exterior temperatures to offset cooling costs
- Average daily temperatures in Manitoba range from a high of 67.4°F (19.7°C) in July to a low of 2.48°F (-16.4°C) in January
- For 5 months out of the year average daily temperatures are below 32°F (0°C)

Temperature Canadian Climate Normals - Winnipeg Richardson International Airport



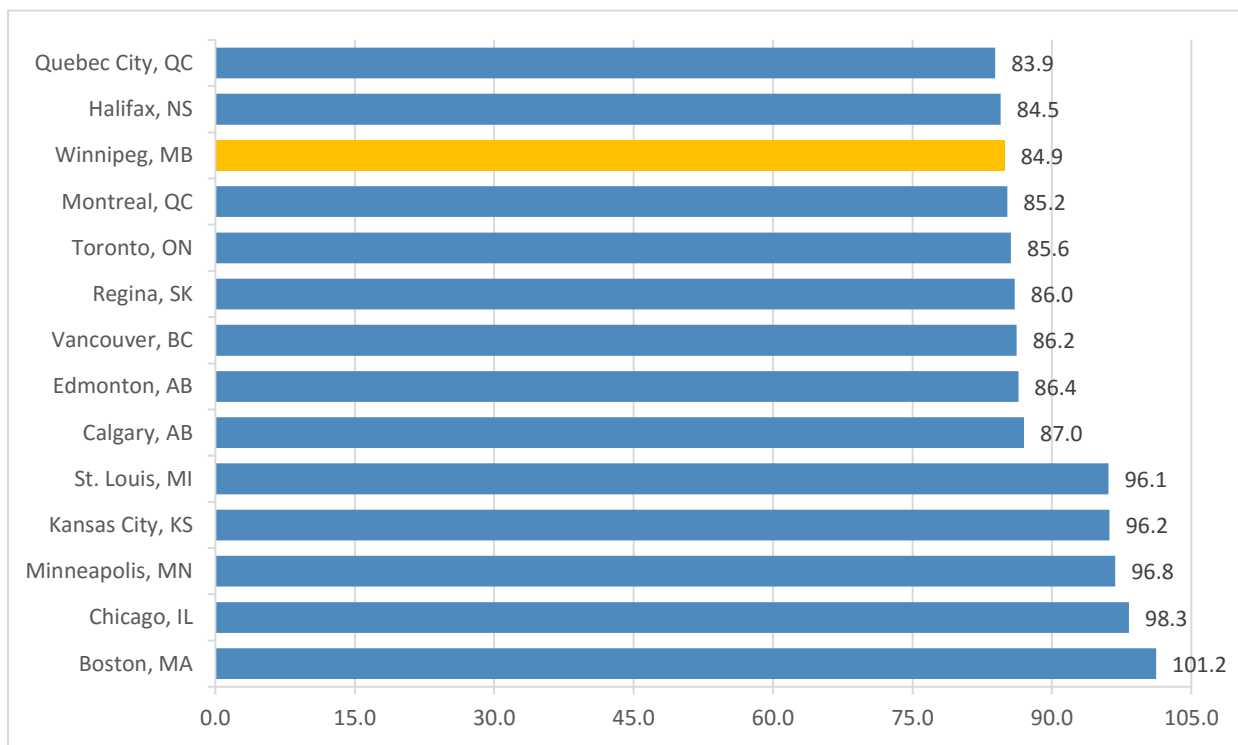
Source: Government of Canada – Canadian Climate

COST OF OPERATIONS

Winnipeg consistently ranked as one of the most cost competitive cities to operate a business. A bi-annual international study of business costs, conducted by KPMG, highlights the competitive costs of Winnipeg, Manitoba, Canada versus other North American cities. The factors used in the assessment calculations include business costs for building and land, transportation and distribution, labor, utilities, financing, and taxes.

In 2016, **Winnipeg ranked number one in overall cost competitiveness** among the 40 cities featured in Western Canada, Midwestern US, and Pacific US. The 2016 edition scored Winnipeg with an overall cost advantage of 15.1 percent relative to the US average (cost index of 84.9, compared to US baseline of 100.0).

Index of Overall Operating Costs North American Metropolitan Areas



Source: KPMG 2016 Competitive Alternatives

MAJOR TAXES in MANITOBA (FEDERAL and PROVINCIAL)

Federal Goods and Services Tax

Individuals, businesses and other entities pay the 5% federal Goods and Services Tax (GST) on most goods and services. Most businesses, including manufacturers and processors, qualify for full input tax credits on the amount of GST paid on purchases made for business purposes where the firm is not the final consumer.

Manitoba Retail Sales Tax

The Retail Sales Tax is an 8 percent tax applied to the retail sale or rental of most goods and certain services in Manitoba. The tax is calculated on the selling price, before the federal GST (Goods and Services Tax) is applied.

Manitoba Health and Post-Secondary Education Tax Levy

The Health and Post-Secondary Education Tax Levy (HE Levy) is a tax imposed on remuneration that is paid to employees. The HE Levy is paid by employers with a permanent establishment in Manitoba. Employers with total remuneration in a year of \$1.25 million or less are exempted (see note below). Associated groups (associated corporations/certain corporate partnerships) must share the \$1.25 million exemption based on the total of their combined yearly payroll.

Corporation Tax Rates

Federal Rates

The basic rate of Part I tax is 38% of your taxable income, 28% after federal tax abatement. After the general tax reduction, the net tax rate is 15%. For Canadian-controlled private corporations claiming the small business deduction the net tax rate is 10.5%. Investment income is at 38.67%

Manitoba Tax Rates

	Income Tax Rate - General and Manufacturing and Processing (M&P)		Income Tax Rate - Canadian-Controlled Private Corporations		Capital-Tax Rates		Payroll Tax	Provincial Sales Tax	
	Prov	Comb	Prov	Comb	Financial Institutions (except Insurance)				
Federal Rate	15%		11%		34.67%		1.25%	-	-
Manitoba	12%	27%	0% or 12%	10.5% or 22.5%	12%	50.67%	0% to 6%	0% to 4.3%	8% PST

Source: Price Waterhouse Coopers, Tax Facts and Figures, Canada 2017

Effective Corporate Income Tax

Progressive reductions in both federal and provincial taxes have created a significant advantage for companies operating in Winnipeg. According to KPMG Competitive Alternatives 2016, the **overall effective corporate income tax rate** in Winnipeg is at 7.0 percent, the lowest rate among the major metropolitan areas in Canada and 3.0 percent lower than Canada.

Detailed Results by City – Overall	
Effective Tax Rates	
City	Corporate Income Tax
Canada	10.0%
Vancouver, BC	14.3%
Edmonton, AB	14.2%
Calgary, AB	14.0%
Halifax, NS	12.1%
Toronto, ON	11.9%
Quebec City, QC	9.0%
Gatineau (National Capital Region), QC	8.2%
Montreal, QC	8.1%
Winnipeg, MB	7.0%

Source: Competitive Alternatives, Focus on Tax 2016

SUPPORTIVE COMMUNITY

Winnipeg has been recognized as a city with strong working relationships between government, business, and academia. This has been positively reinforced by The Site Selectors Guild members, who commented on the interconnectivity and accessibility of Winnipeg’s business, government and academic leaders during their FAM tour.

Information Communication Technology Association of Manitoba (ICTAM)

Representing Manitoba’s ICT industry, ICTAM is dedicated to growing their sector through education, collaboration and advocacy. ICTAM programming is delivered to elevate their members’ ability to access talent, create business opportunities and develop leadership.



New Media Manitoba (NMM)

A professional association providing training, advocacy, and networking opportunities for the Manitoba new media industry.



Post-Secondary Institutions

Winnipeg has three major post-secondary institutions, all of which offer co-op and work experience programs relevant to data centers. All three post-secondary institutions frequently collaborate with industry to develop their programs. They have all vocalized their commitment and interest in continuing to do so. These schools market themselves as a network of post-secondary institutions that offer choices to students and employers; they do not view themselves as directly competing with one another.



UNIVERSITY
OF MANITOBA



INCENTIVES

The Province of Manitoba has made a commitment to develop a strong, educated, and diversified workforce to ensure that local companies have the talent they need to run a successful business. There are many government programs, agencies, and tax credits that have been implemented to achieve this goal.

Manitoba Research & Development (R&D) Tax Credit

This program targets scientific research and experimental development (as defined for federal purposes) carried on in Manitoba. Corporations may earn a 15 percent tax credit which can be applied against Manitoba corporate income tax payable in the year earned. The credit is 100 percent refundable for R&D performed under contract with a prescribed Manitoba institution, including post-secondary institutions, and 50 percent refundable otherwise. Unused credits can be carried forward 20 years or carried back three-years. This program is administered by Canada Revenue Agency on behalf of Manitoba.

Training Support

To help ensure that the data center operation has access to top talent for its Winnipeg operations, the Province of Manitoba may offer non-repayable financial assistance to support training costs associated with the creation of specified new, full-time equivalent (FTE) positions in the province.

Manitoba Interactive Digital Media Tax Credit

This is a refundable income tax credit for companies that develop and produce eligible interactive digital media projects in Manitoba. Eligible projects must be approved by the Manitoba Department of Growth, Enterprise and Trade. The tax credit is administered by Canada Revenue Agency and claimed with the corporate income tax return.

Paid Work Experience Family of Tax Credits

The Paid Work Experience family of tax credits provides qualified employers with income tax credits for the wages and salaries paid to certain types of trainee employees and recent graduates working in Manitoba. All

components of this program are fully refundable income tax credits, claimed on the corporate income tax return. They are available to those who hire co-op students for work placements as part of a recognized college or university program and recent graduates of registered co-op education programs. The following conditions apply to all components:

- Work must be performed primarily in Manitoba.
- The employer must reside in or have a permanent establishment in Manitoba.
- There is no limit on the number of hires.
- Eligible employer wage costs are net of other government assistance.

Green Energy Equipment Tax Credit

This refundable tax credit promotes the production and purchase of machinery and equipment used to generate renewable energy in Manitoba. Eligible equipment includes geothermal heating equipment, solar thermal heating equipment and gasification and biomass-fuel energy equipment, installed in Manitoba and used in a business. This program is administered by Canada Revenue Agency and claimed on the corporate income tax return.

City of Winnipeg

Tax Increment Financing (TIF)

A public financing method that is used for subsidizing redevelopment, infrastructure, and other community-improvements projects. TIF is a method to use future gains in taxes to subsidize current improvements, which are projected to create the conditions for said gains.

Manitoba Hydro

Manitoba Hydro partners with businesses to support their diverse energy needs and ensure they have safe, reliable supplies of electricity and natural gas. Our commercial and industrial Power Smart programs have helped customers' facilities become some of the most efficient in North America. Building owners and managers know that high-performing buildings can reduce energy bills and operating costs; improve comfort; extend equipment life; reduce greenhouse gas emissions; and demonstrate environmental leadership.

Financial incentives exist for a wide array of technologies when conducting renovations to existing facilities; these include but are not limited to:

- Building envelope including windows, curtain wall, and insulation.
- Heating, ventilation and air conditioning (HVAC) equipment including geothermal systems, boilers, heat recovery ventilators, carbon dioxide (CO₂) sensors, and water heaters.
- Indoor and outdoor lighting and controls.
- Solar photovoltaic systems.

New construction projects receive technical guidance and financial incentives for energy modeling and energy efficient construction, including:

- Incentive of up to \$10,000 for a completed design energy modeling report before the project is tendered.
- Incentive ranging between \$0.50/sq. ft. to \$2.00/sq. ft. of the building's eligible floor space.

Manitoba Hydro Custom Measures Program

Custom Measures Program provides financial incentives for designing, constructing, and operating energy efficient buildings in Manitoba. For a building to receive financial incentives it must have a minimum project electrical energy savings of 15,000 kWh or 7,500 m³ per year of natural gas savings.

Feasibility study incentive - 100% of the first \$10,000; 25% of the remaining portion

Energy Savings incentive - \$0.20/kWh saved - annual electric; \$0.30/m³ saved - annual natural gas

Conditions - Incentive maximum of \$250,000 limited to 50% of the total project cost or the amount required to reach a 1-year payback on incremental cost

Government of Canada

Strategic Innovation Fund

The data center operation may be eligible for flexible funding options through this program that supports new high-quality business investments throughout Canada with repayable and non-repayable funding options.

BDC Capital

As a key player in Canada's venture capital market, BDC Capital invests directly into companies and indirectly to help commercialize new ideas in tech and other sectors.

Canada Infrastructure Bank

The Canada Infrastructure Bank can help attract private sector and institutional investment to new revenue-generating infrastructure projects.

Export Development Canada

Export Development Canada (EDC) is Canada's export credit agency, tasked with supporting and developing Canada's export trade by helping Canadian companies respond to business opportunities. EDC provides financing support to both greenfield and brownfield investments. These include investments in new facilities.

Scientific Research and Experimental Development Tax Incentive Program (SR&ED)

The SR&ED program provides a tax deduction and an investment tax credit of 35 percent of qualified expenditures. It is one of the best tax credits of its kind in the developed world.

OUR SERVICES – YES! WINNIPEG

YES! Winnipeg, an initiative within Economic Development Winnipeg Inc., is a not-for-profit business development team dedicated to growing and strengthening Winnipeg's economy. YES! Winnipeg assists in the creation and retention of jobs, proactively identifies opportunities that attract new business investment, focuses on business expansion, and helps local entrepreneurs launch new commercial ventures.

Our mandate is to assist in the creation of new jobs and economic investment for our city, and with that in mind our team is in pursuit of R.E.A.L. opportunities with the "R" standing for Retention, "E" for Expansion, "A" for Attraction, and "L" for business Launch or start-up.

Retention – If we hear of a local company considering leaving Winnipeg for the wrong reasons, we will do everything we can to address their concerns and needs and re-focus their attention on Winnipeg's many compelling strengths and advantages.

Expansion – We will reach out to existing Winnipeg businesses that are poised for growth and assist them in implementing the next exciting chapter in their evolution.

Attraction – Through our proactive meetings with top local firms to identify "leads", proactive letters to leading non-Manitoba companies, arranging "b-to-b" meetings at international conferences, and developing relationships with leading Site Selector Consultants, we identify companies that do not have a local presence but would be a natural fit to enhance our community and we make them aware of our compelling value proposition.

Launch – We will assist entrepreneurs as they take their business idea and turn it into commercial success.

We work with our clients to determine what key steps or actions need to be taken so they can launch their new business or expansion, and how can we assist. Do they need help arranging financing or securing investment? Are there government assistance programs that might apply? Can we help open doors for strategic customers or suppliers? Do they need help in finding the right location or staff? Is there important information they need to make their decision? Can we help navigate government departments? We know the right people to get what's needed, we facilitate those connections, we mobilize collaborative efforts and we stay engaged to ensure the right outcome is achieved at the speed of business.

The valuable services that we offer are provided free of charge thanks to the generous financial contributions of our many private and public sector investors. We continuously track the impact we are having and regularly report our progress to our investors.



Bill Coulter
(204) 954-1976
bcoulter@yeswinnipeg.com
www.yeswinnipeg.com

